

TECHTIPS

For HAPPY HCA, HCG, and HCM machines

Steps for Setting up a PC-to-Machine Connection

Using HAPPYLINK to connect your HCA/HCG/HCM machine via serial port

Background: For those seeking an alternate means to transfer .dst and .tap designs into their HAPPY HCA/HCG or HCM (other than the floppy disk reader), you can connect a PC (with a serial port) to the compatible 25-pin RS-232 port on its control panel. Follow the directions on these 2 pages to set this up.

1. Install HAPPYLINK on a PC.

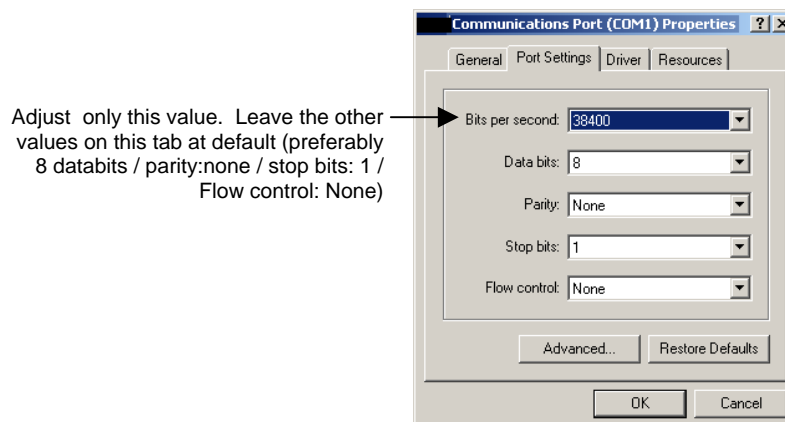
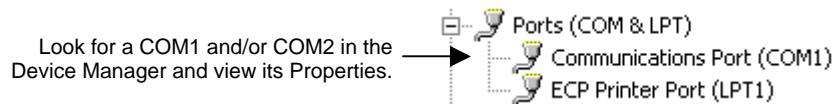
2. **Obtain the special RS-232 type cable (9-pin-to-25-pin)** required for the connection between your machine and your PC. (PC MUST have a serial port.) You can buy this from the parts — department.

3. Set up your embroidery machine (must be a current-generation HCA/HCG/HCM machine)

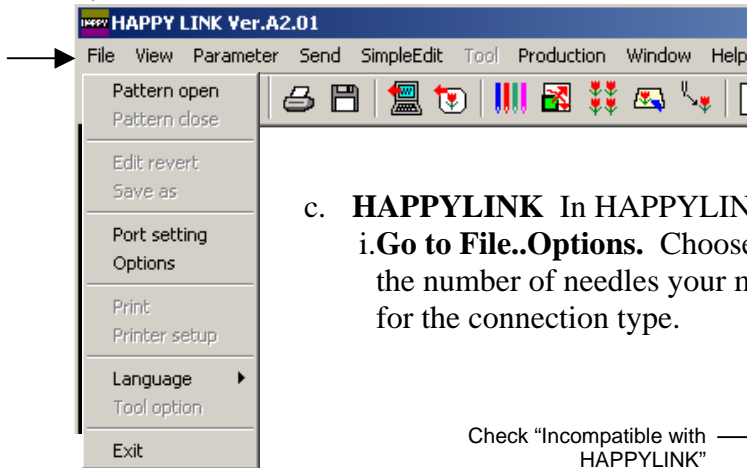
a. HAPPY HCA/HCG/HCM Machine

- i. In the Create menu,
 - (a) Set “etc function read” to “ON”
 - (b) “Set etc function write” to “ON”
- ii. In the RS-232 menu,
 1. make sure it is set to “on”
 2. match the transfer speed (38,400 generally works best)

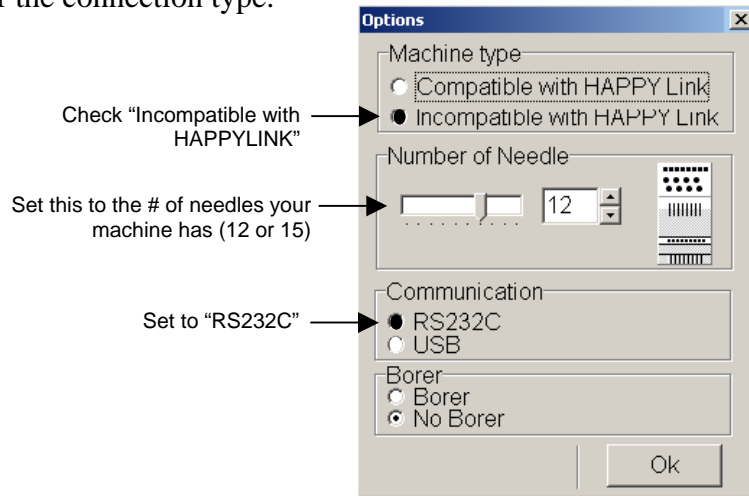
b. **COMPUTER** In the computer's device manager, take note of the COM port (usually COM1) you're using, and ensure that its speed is set to match the transfer speed of the machine (38,400 generally works best). You can get there by right-clicking on your computer and choosing Properties. In the System Properties window that appears, click on Hardware. The resulting page should have a button for the Device Manager.



File pulldown menu in HAPPYLINK



- c. **HAPPYLINK** In HAPPYLINK itself,
 i. **Go to File..Options.** Choose "NOT Compatible with Happy Link", choose the number of needles your machine has, no borer, and RS-232 (not USB) for the connection type.



- ii. **Go to File..Port Settings.** Match the COM port number to the one you intend to use (usually COM1). Also match the connection speed to what you've chosen in the machine (38,400 generally works best).

